



*Special Convocation
with the Chancellor*

CAESAR A. SALOMA

9th Chancellor, UP Diliman

Thursday, 8 December 2011 • 4:30 in the afternoon • University Theater



UP Diliman: Its Trajectory in the Next 27 Months

**Caesar Saloma
Chancellor
University of the Philippines Diliman**

2011 UP Diliman Convocation
UP Theater
8 December 2011 (Thursday), 4 pm

Organization of Presentation

- **Introduction**
- **UP Diliman Today**
Academic, Operations, Community
- **Future Plans**
- **Final Remarks**

Republic Act 9500

An Act to Strengthen UP as the National University

29 April 2008



SECTION 3. PURPOSE OF THE UNIVERSITY

The University shall serve as a:

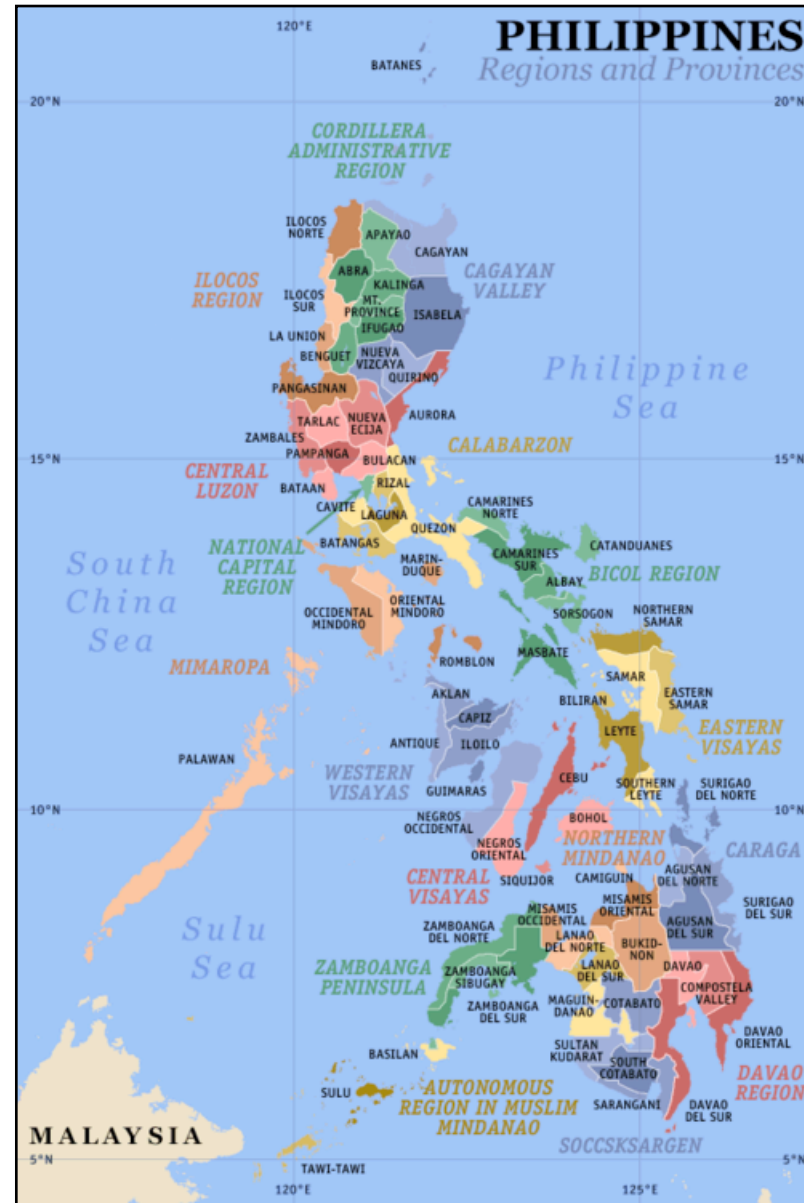
- **Graduate university**
- **Research university**
- **Public service university**
- **Regional and global university**

The University of the Philippines System

Established on **18 June 1908**

Constituent Universities (15 Campuses)

- **UP Baguio**
- **UP Diliman**
- **UP Los Baños**
- **UP Manila**
- **UP Mindanao**
- **UP Open University**
- **UP Visayas**



wikipedia

University of the Philippines System

Faculty (30 April 2011): **3,430**

Students (SY 2011-12): **51,473**

Admin. Personnel (AP): **3,691** (excl. PGH*)

REPS: **947**

- **UP Diliman**

Faculty: **43.6%**

Undergraduate: **43.9%**

AP: **37.9%**

Graduate: **59%**

REPS: **37.4%%**

- **UP Los Baños**

Faculty: **24%**

UG: **27.4%**

REPS: **37%**

G: **10.8%**

- **UP Manila**

Faculty: **16.4%**

UG: **12.92%**

AP: **7.7%**

G: **7.7%**

*PGH: 3,177

One University, One UP



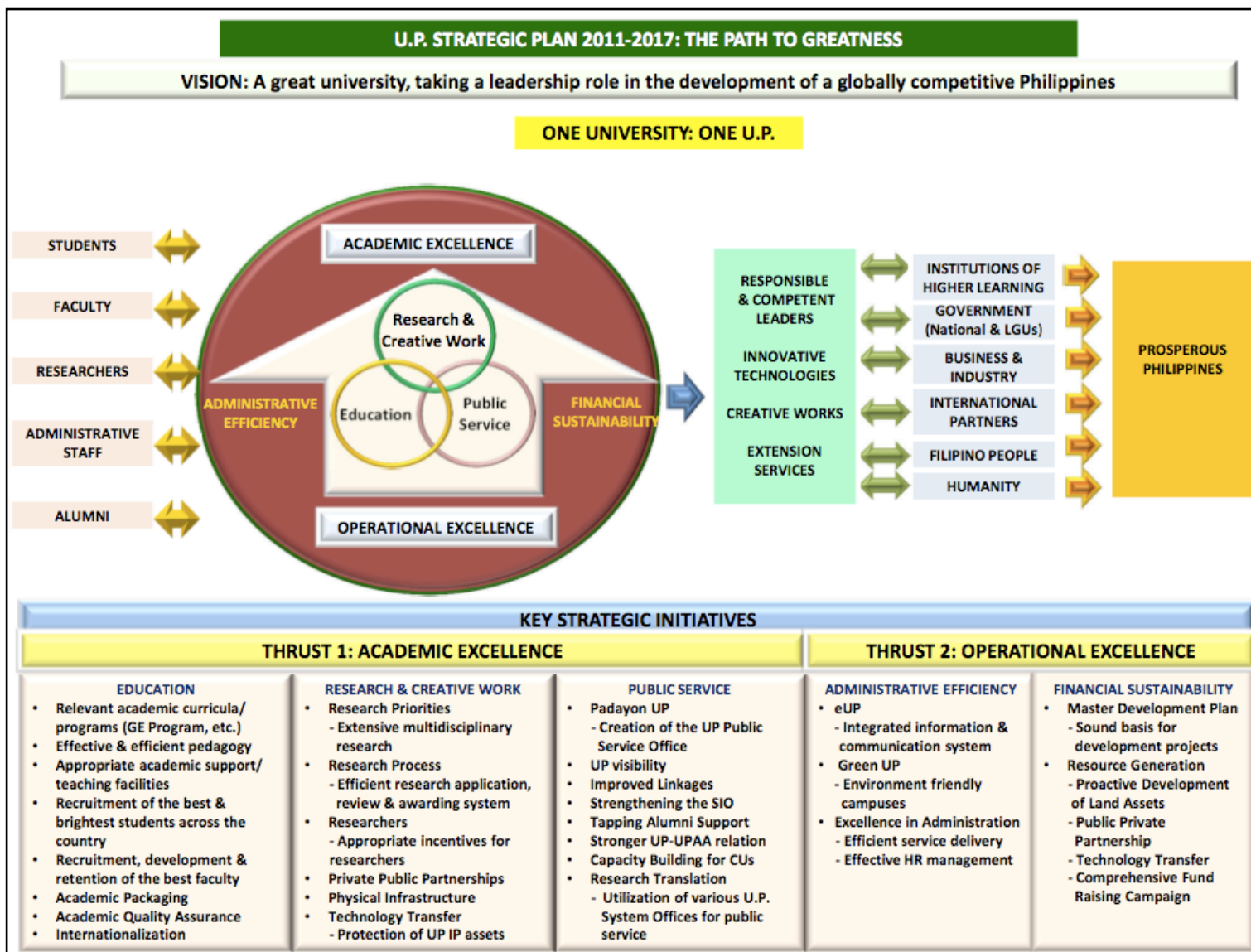
"The remaking of UP as a great university can only be achieved through our unified effort, and our individual and collective recognition that we are **One UP**.

We are **One UP** guided by **one Charter**, upholding the same tradition of **honor and excellence** in the service of the people"

*-President Alfredo Pascual, Investiture Speech, 15 September 2011
20th President of the University of the Philippines*

UP Strategic Plan 2011-2017

Approved by the Board of Regents on 17 August 2011



Source:
OVPPA

Philippine Higher Education System



No. of Institutions (2009): 1,758 (**88.2% private**)
State Universities & Colleges: 109 (+ 81 LUC's)
National Universities: 1 (UP)

Undergraduates (SY 2009-10): 2,770,965
(**39% in SUC's & LUC's**)

Graduate (SY 2008-09): 469,654

HEI Faculty with PhD degrees: **8% (SY 2000-01)**
9.08% (SY 2004-05)

Sources: The 2009 CHED Annual Report/ CHED Statistics Publications

Engineering Research & Development for Technology (April 2007)

- **University of the Philippines**
- **Ateneo de Manila University**
- **Central Luzon State University**
- **De La Salle University**
- **Mapúa Institute of Technology**
- **MSU-Iligan Institute of Technology**
- **University of San Carlos**

Source: www.coe.upd.edu.ph

National Science Consortium (2009)

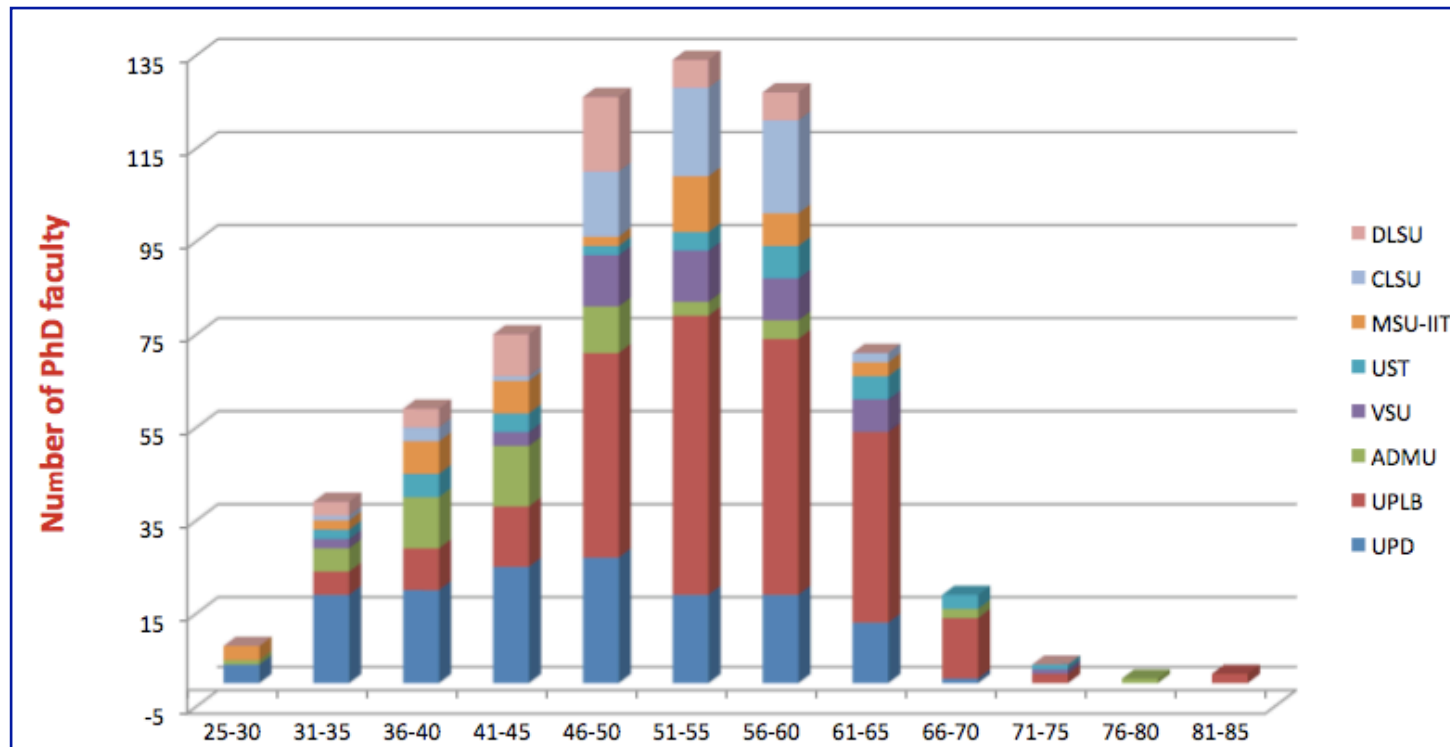
- **University of the Philippines**
- **Ateneo de Manila University**
- **De La Salle University**
- **Central Luzon State University**
- **MSU – Iligan Institute of Technology**
- **University of Santo Tomas**
- **Visayas State University**

Number of PhD Faculty (20 Oct 2010): 764

Source: 2009 DOST-Science Education Institute Survey for the National Science Consortium (ASTHRDP)

National Science Consortium: Demographics

20 October 2010



Total Number of PhD Faculty: 764

51 years old and above: 56.7%

Generation of New Scientific Knowledge

- **Per million of Philippine population (2008):**
Researchers - 81
Technicians - 10

Singapore (per million): 6,088 researchers, 529 technicians
Thailand: 311 researchers, 160 technicians

- **SCI-indexed publications (2008) - 624**

Singapore (6813), Thailand (4134)

Source: UNESCO Science Report 2010

Admission into UP Diliman

Source: Office of the University Registrar

Yearly Averages (13 year-period up to SY 2011-12)

- **UPCAT Applicants*:** **66,714.75**
[2011 (max): **71,800**; 2009 (min): **62,977**]
- **Qualifiers:** **3,949.46** (**5.96%**)
(1999: **4,744**; 2000: **3,735**; 2011: **3,821**)
- **Qualifiers Enrolled:** **2,588.62** (**65.53%**)
(1999: **3,369**; 2000: **2,556**; 2011: **2,504**)

* Includes August 2011 applicants

Admission into UP Diliman

Yearly Averages (SY 2010-11, SY 2011-12):

- **Qualifiers: 3,826**
- **New Undergraduates: 3214 (84%)**
2485 + 729 (Transferees)
- **High School Graduates (5-year average): 1.24 million**
- **Philippine Population: 76.504 million (2000)**
94.013 million (2010)

UP Diliman Academic Community

as of 26 August 2011 (Sources: OUR, HRDO, UPDEPP-OD)

- **Student Population: 24,395 (Undergraduate: 17,305)**

UPDEPP: 569 (UG) 99 (G)

- **Graduate-to-Undergraduate Ratio: 1:2.4**
- **Male-to-Female Ratio: 1:1.4**
- **Undergraduate Degree Programs: 67 + 3 (UPDEPP)**
- **Graduate Degrees: Masters (90), Doctoral (136)**

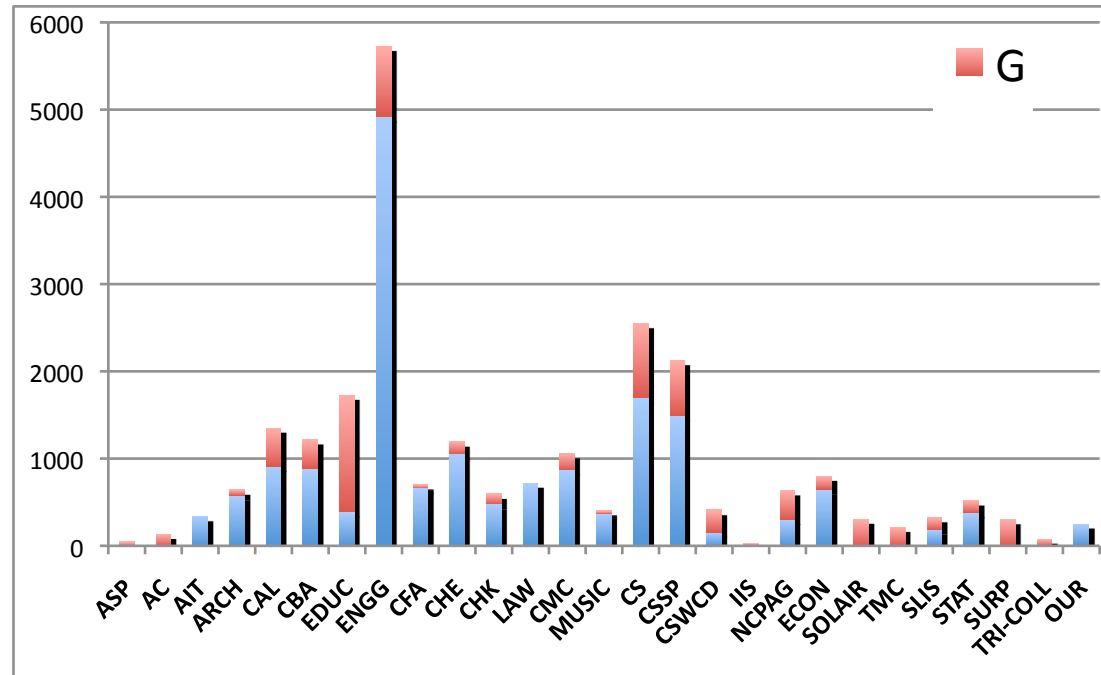
UP Diliman Academic Community

as of 26 August 2011 (Sources: OUR, HRDO)

- **Full-time Faculty: 1,539 (36% with doctoral degrees)**
 - 302 Professors**
 - 293 Associate Professors**
 - 506 Assistant Professors**
 - 4 Research Professors**
 - 434 Instructors**
- **Faculty-to-Student Ratio: 1:15.85**

UP Diliman Enrollment

Source: OUR (as of 13 July 2011)



Enrollment : 24,395 (UG: 17,305)

UG: Engineering (4922), Science (1698), CSSP (1494)

Graduate: Education (1336), Science (855), Engineering (805)

Freshmen: Engineering (989), Science (414), CSSP (257)

Undergraduate Degree Programs in UP Diliman

as of 30 June 2011 (Source: OUR)

Undergraduate Degree Programs: **67 + 3 (UPDEPP)**

Degree Programs Per College: AIT (1), Architecture (2), Arts & Letters (**10**), CBA (2), Fine Arts (1), CHE (7), CHK (2), CMC (4), Science (7), CSSP (**9**), CSWCD (2), Education (2), Engineering (**12**), Music (1), NCPAG (1), Economics (2), SLIS (1), Statistics (1), UPDEPP (3)

Programs with filled (90%+) quota: **27 out of 67 (40.3%)**

AIT (0), Architecture (1), Arts & Letters (**1 out of 10**), CBA (0), Fine Arts (0), CHE (3), CHK (0), CMC (2), Science (**5/7**), CSSP (**2/9**), CSWCD (0), Education (0), Engineering (**11/12**), Music (0), NCPAG (0), Economics (**2/2**), SLIS (0), Statistics (0)

Comparison: Undergraduate Enrollment SY 2006-07 and SY 2010-11

- **Increase in Enrollment**

Engineering (11 degree programs): +20.37%

Science (7): +12.9%

- **Decrease in Enrollment**

CSSP (9): -18.18%

CAL (10): -19.17%

Home Economics (7): -4.03%

Source: OUR

Distribution of Faculty and REPS

- **Regular Faculty (Top 5)**

**Science (309), Engineering (225) Arts & Letters (191),
CSSP (184), CHE (59)**

- **Full Professors: Science (65), CSSP (49)
Arts & Letters (43), Engineering (21), CBA (17)**

- **REPS: Science (112), NCPAG (24), CSSP (16)
Engineering (14)**

Socialized Tuition Fee and Financial Assistance Program

Restructured on 15 December 2006

STFAP Bracket (Gross Family Income in PhP)	1 st sem, SY 2011-12	2 nd sem, SY 2011-12
A (> 1M)	1859 (13%)	2539 (17%)
B (500,001-1M)	10324 (74%)	9510 (64%)
C (135,001-500K)	835	1467
D (80,001-135K)	725	1032
E1 (80K or less)	168	260
E2	33	78
Total	13,954	14,929

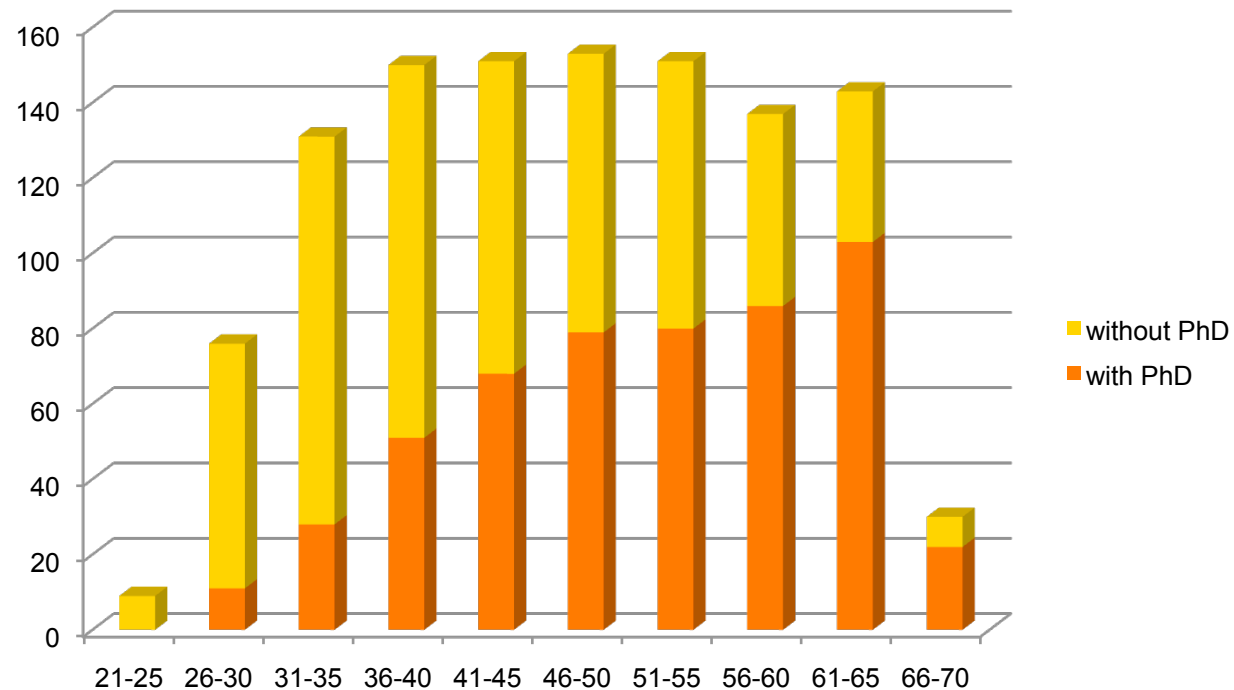
Undergraduate Enrollment:

1st semester: **17,305**

2nd semester: **16,621**

Faculty Demographics

as of 28 November 2011



Faculty with doctoral degrees: 46.7%

PhD faculty who are 56 years old and above: 40%

Indicators of Success as a National University

- **New scientific knowledge**
- **Seminal creative and scholarly works**
- **Next generation of scholars, scientists, researchers and artists.**

Indicator: Graduation Rates

Source: OUR

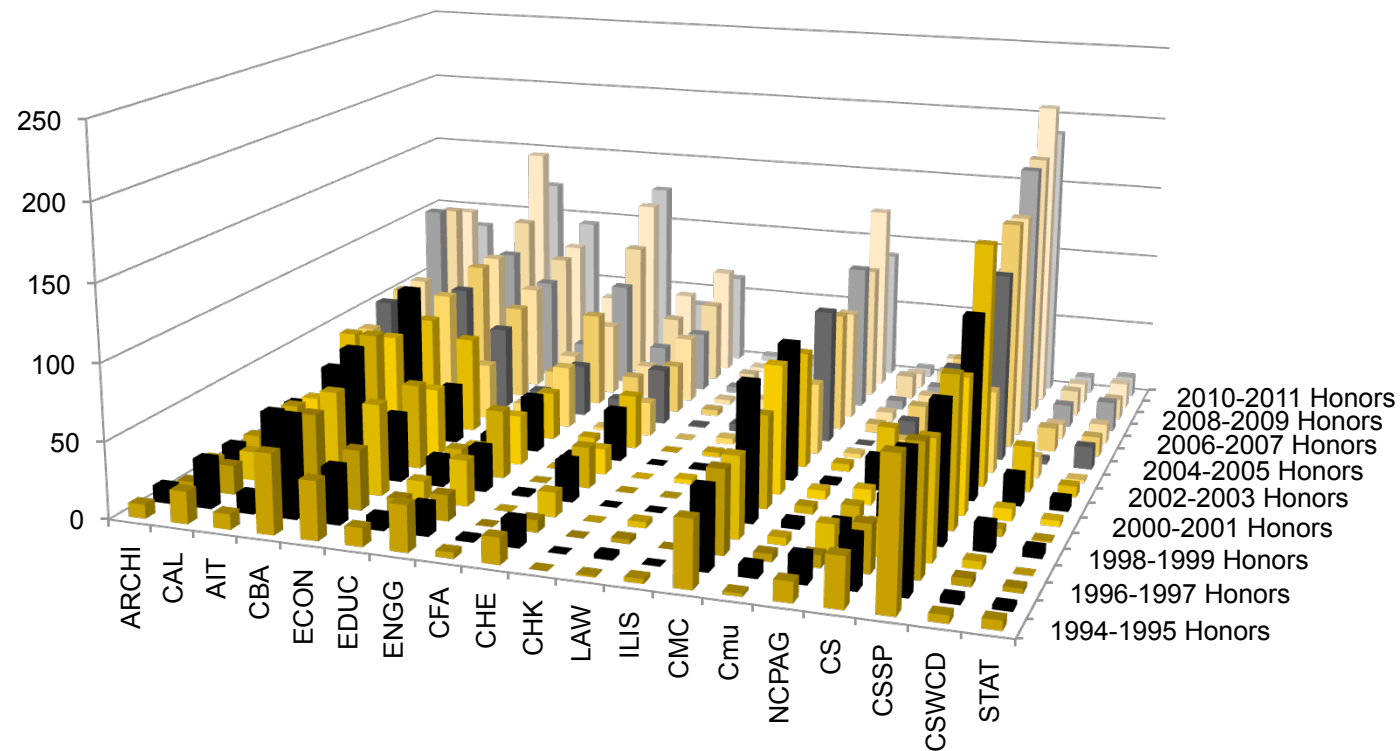
Yearly Averages (13 year-period ending SY 2011-12)

- **UPCAT Applicants: 66,714.75**
- **New Students: 3214**

- **BS Graduates: 3190.25**
- **MS Graduates: 627.34**
- **PhD Graduates: 73.34**

- **PhD Faculty (Nov 2011): 528**

Graduating with Honors

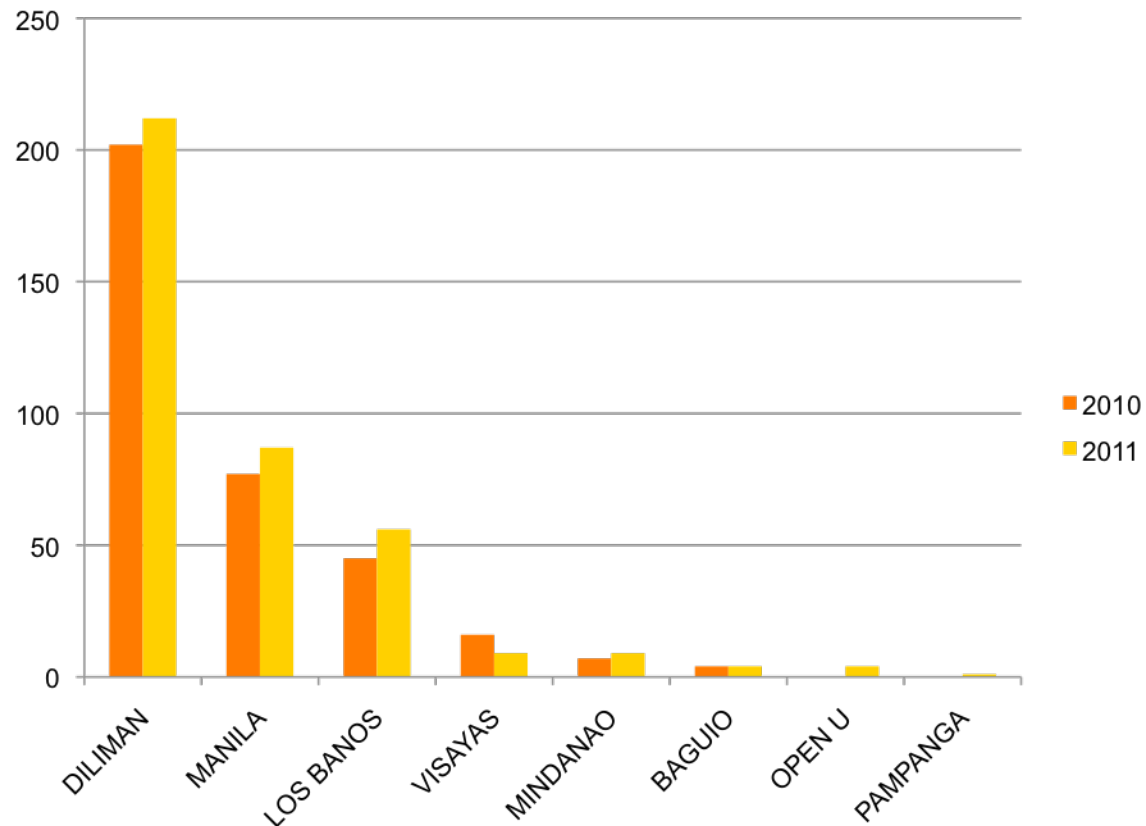


Graduates with Honors (%): **13.2** (SY 94-95), **13.3** (SY 99-00)
20.8 (SY 05-06)
28 (SY 08-09)
27.5 (SY 10-11)

Source: OUR

Indicator: Peer-reviewed Publications Scopus Database

PhD Faculty* (970)
UPD: 511 (52.7%)
UPLB: 266
UPM: 65
*July 2010



UP Total: 351 (2010), 382 (Jan-Nov 2011)

UP Diliman: 57.55% (2010), 55.5%

Source: CS Library

UP Diliman: Operational Cost

- **Electricity**
- **Water**
- **Security Services**
- **Janitorial Services**

Power Cost

Electricity Bill (2010): PhP 175.158M

Increase from 2009 to 2010: 29.165M

Average Increase (2005-2010): 8.993M per year

Source: UPD Accounting Office

Water Consumption Cost

Water Bill (2010): PhP72.23M

Increase from 2007 to 2008: 20.19M

Average Increase (2005-2010): 8.364M per year

Source: UPD Accounting Office

Cost of Security Services

Security Contracts (2010-11): PhP88.164M

Personnel: 144 (North) + 158 (South)

Average Increase (2005-2010): 6.5% per year

Source: UPD Accounting Office

Cost of Janitorial Services

Service Contracts (2010): PhP52.003M

Personnel: 158 (North) + 147 (South)

Average Increase (2005-2010): 11.7% per year

Source: UPD Accounting Office

Cost of Utility and Services (2010)

Electricity: PhP175.158M

Water: 72.23M

Security: 88.164M

Janitorial: 52.003M

Total: PhP387.394M

UP Diliman: Internal Operating Budget 2011

General Fund (General Appropriations Act 2011)

- **Personnel Services (in PhP)**
UP*: **5.295620B**
UP Diliman: **1.601151B (30.24%)**
- **Maintenance, Operating and Other Expenses (MOOE)**
UP:** **671.838M**
UP Diliman: **98.243M (14.62%)**
- **Academic Program Improvement**
UP: **8.285M**
UP Diliman: **None**

*** Incl. PGH (1.179185B, 22.27%); ** PGH (303.188M, 45.13%)**

Cost of Operating UP Diliman in 2011

Source: UPD Budget Office

- **General Fund (GAA 2011) – 1.8994B (85.97%)**

- **Revolving Fund – 309.965M (14.03%)**
 - Business Income: 209.225M (84.72%)**
 - Other Income: 36.554M**
 - Service Income: 1.186M**

Total: 2.209365B

UP Diliman

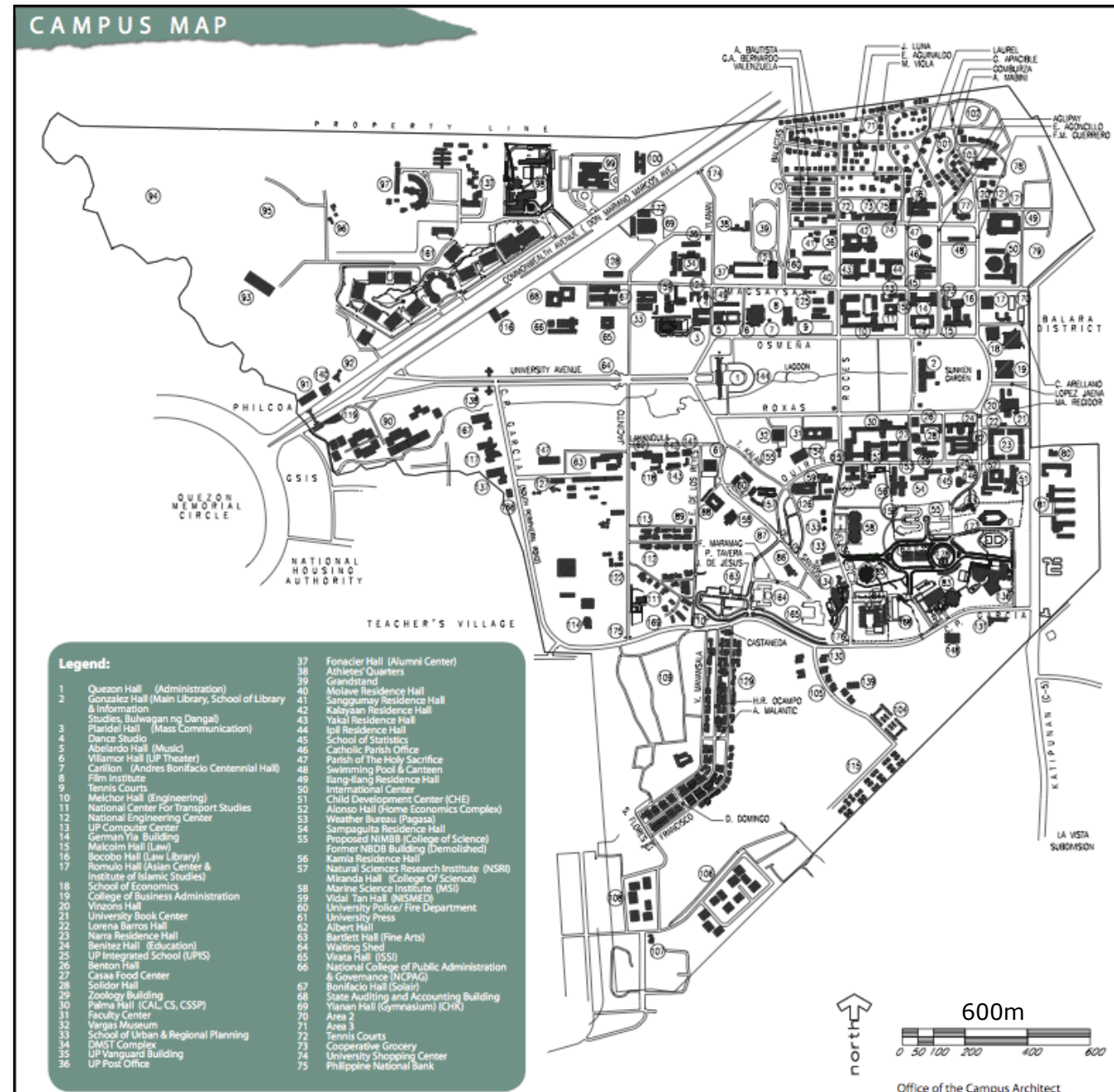
Area: 493 hectares
4.93 km²

Road Network*:
32.7 km

Road surface: 26.2 hectares

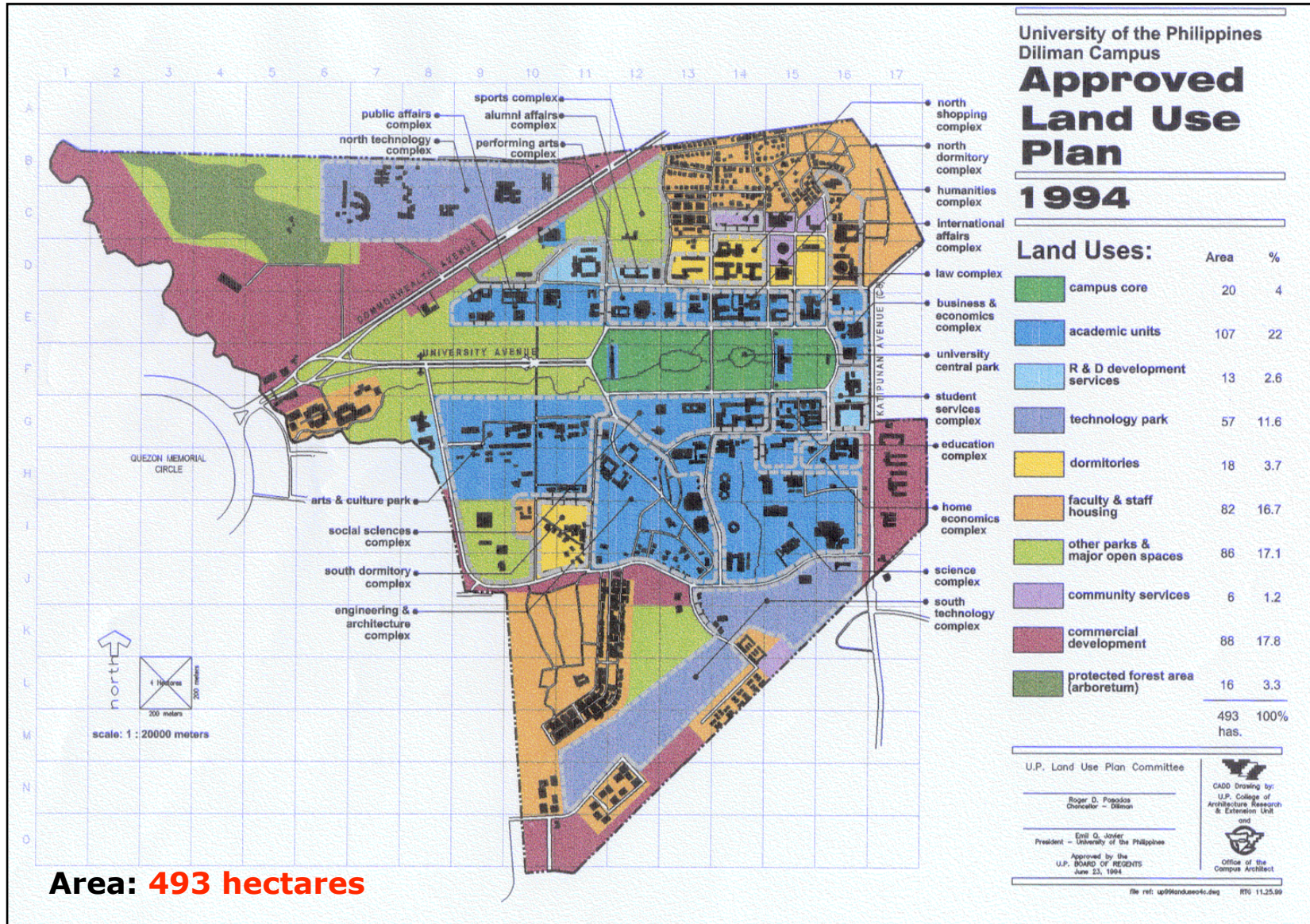
**Barangays (7): UP
Campus (main),
KnL, San Vicente,
Old Capitol Site,
Botocan, Culiat
Pansol**

***excl. CP Garcia,
Commonwealth, C5**



The UPD Land Use Plan

Approved by the UP Board of Regents on 23 June 1994



UP Diliman: 2011 OC Census

Source: Office of the Vice-Chancellor for Community Affairs

- **Number of Households – 15,484**

UP Campus	5022
Botocan	395
San Vicente	967
Old Capitol Site	1100
Krus na Ligas	8,000
Culiat	No data

UP Campus: 2011 OC Census

Source: Office of the Vice-Chancellor for Community Affairs

- **Number of Households - 4520**

Arboretum (**503**), Area 17 (315), Aguinaldo (71), Amorsolo (76), Daan Tubo (912), Dagohoy (**435**), CP Garcia (351), Libis (**578**), Malinis (172), Palaris (372), Ricarte (226), Village A (290), Village B (126), Village C (93)

- **Number of Structures - 2331**

Arboretum (165), Area 17 (131), Aguinaldo (31), Amorsolo (50), Daan Tubo (**410**), Dagohoy (**287**), CP Garcia (202), Libis (**397**), Malinis (75), Palaris (171), Ricarte (96), Village A (158), Village B (95), Village C (63)

- **Household Covered: 91%**

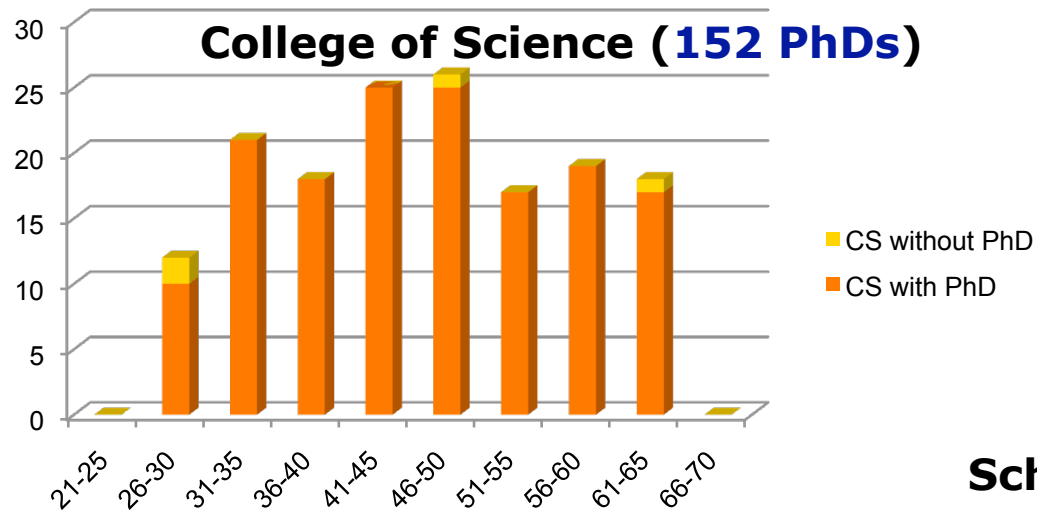
(Out during census: 448)

Barangay UP Campus: 2011 Census

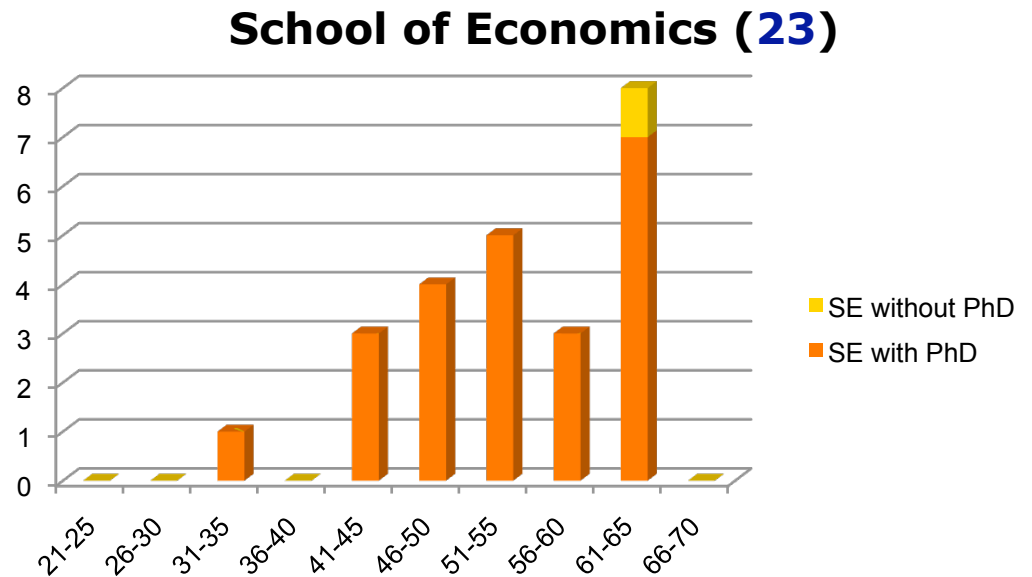
Source: OVCCA in coordination with Barangay UP Campus

- **Households - 4520**
- **Structures - 2331**
-
- **Households per Structure – 1.94**
- **Members per Household – 4.2**
- **UP-to-Non UP Household Ratio – 309:3783**
- **Population: 18,978**

Academic Excellence: Increasing the Number of PhD Graduates



PhD Graduates per Year: 73.34
PhD Degree Programs: 136
PhD Faculty: 528



Increasing the Number of PhD Graduates

- PhD Graduates per Year: **73.34**
- PhD Degree Programs: **136**
- PhD Faculty: **528**
- Goal: **PhD Faculty Number/3**
- Current Recognition Programs: **Scientific/Artist Productivity Systems International Publication Awards, Grants, Professorial Chairs, Professor Emeriti**
- Future Directions: **Strengthen existing programs, University Professorships, Intellectual Property Rights**

Strengthening of General Education Program

- **Current GE System (since 2001): 45 units**
Cafeteria-style
15 (A&H), 15 (MS&T), 15(SS&P)
- **Objectives: Core competencies, Critical thinking,
Liberal education, Ethical compass, Love of country,
Love of learning**
- **Graduates with Honors (%):**
13.2 (SY 94-95)
13.3 (SY 99-00)
20.8 (SY 05-06)
28 (SY 08-09)
27.5 (SY 10-11)
- **UPD GE Conference: 20-21 October 2011**

Support for Research

- **Priority to proposals that promotes a **nurturing, enabling** and **empowering** UP Diliman campus**
- **Security, use of UPD assets, admission systems, transportation, disaster and risk management, UHS and academic research, utility management, etc.**

Research Focus

- **Priority to proposals that promotes a **nurturing, enabling** and **empowering** UP Diliman campus**
- **Security, use of UPD assets, admission systems, transportation, disaster and risk management, UHS and academic research, utility management, etc.**

UP Diliman Student Manual

Ang Gabay ng Iskolar ng Bayan

Version 2012

- **Reference Materials:** 2010 Code of Student Conduct (Draft approved by the UPD Execom on 21 June 2010), 2011 Student Handbook of Rights and Responsibilities
- **Proposed Title:** UP Diliman Student Manual
Ang Gabay ng Iskolar ng Bayan
- **Vision:** Inspirational, Informative, Clear and efficient procedures
- **Implementation Date:** SY 2012-2013

Reducing the Cost of Utilities

Improving Effectiveness (Value for money)

- **Electricity (2010): PhP175.158M**
- **Water: 72.23M**
- **Security: 88.164M**
- **Janitorial: 52.003M**

Security System for UP Diliman

- **Hybrid of manpower and technology**
- **Competency Programs and Equipment for UPDP**
- **Proper training for SSB personnel**
- **UP Diliman Safety and Welfare Committee**
- **Chief Security Officer**

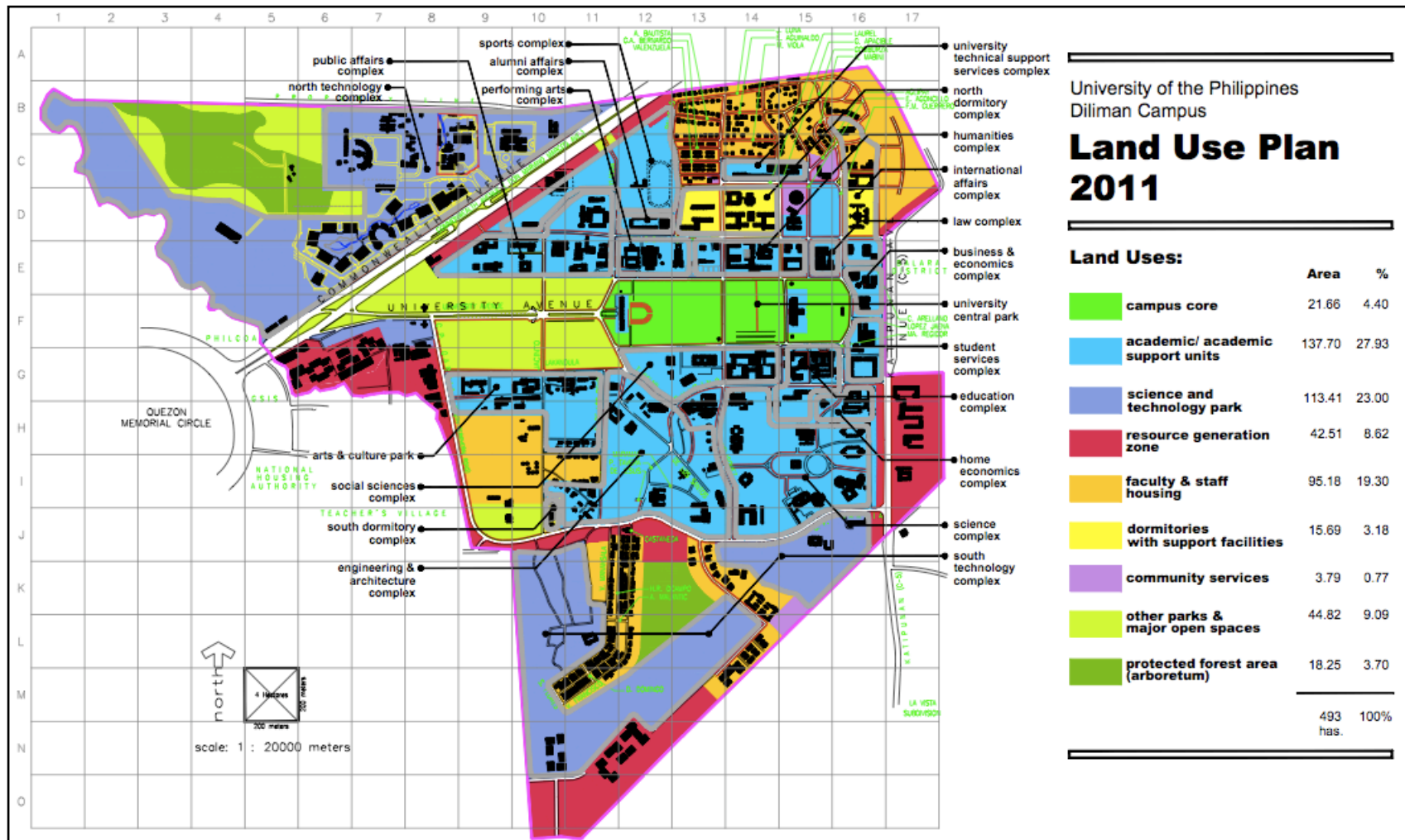
Completion of On-Going Projects

- **Site Development - Engineering Complex (ERDT)**
- **National Science Complex**
- **UP Diliman Extension Program in Pampanga (Clark: 3.28 hectares)**
- **Rehabilitation & Repairs (Swimming Pool, Repiping, CFA, CHK Gym, etc)**
- **Make-over (Oblation Plaza, Lagoon, University Avenue, etc)**

New Infrastructure Projects

- **UP Sports Complex (PhP400M)**
- **Student Center (Vinzon's Hall)**
- **Palma Hall Pavilions, Benton Hall, UP Theater**

Updated UP Diliman Land Use Plan

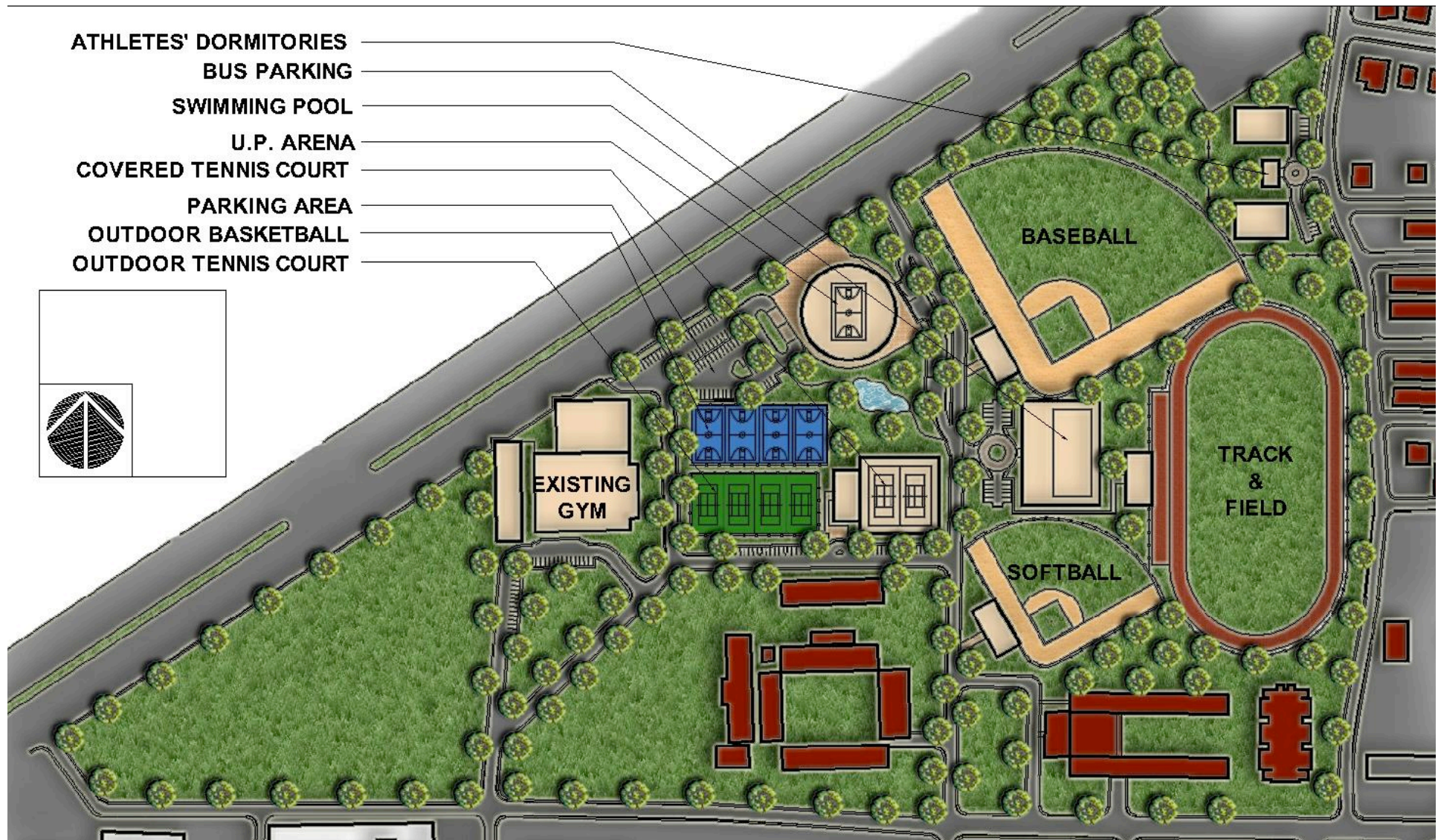


Proposed Updated Version

UP Sports Complex

Estimated Cost: PhP400M

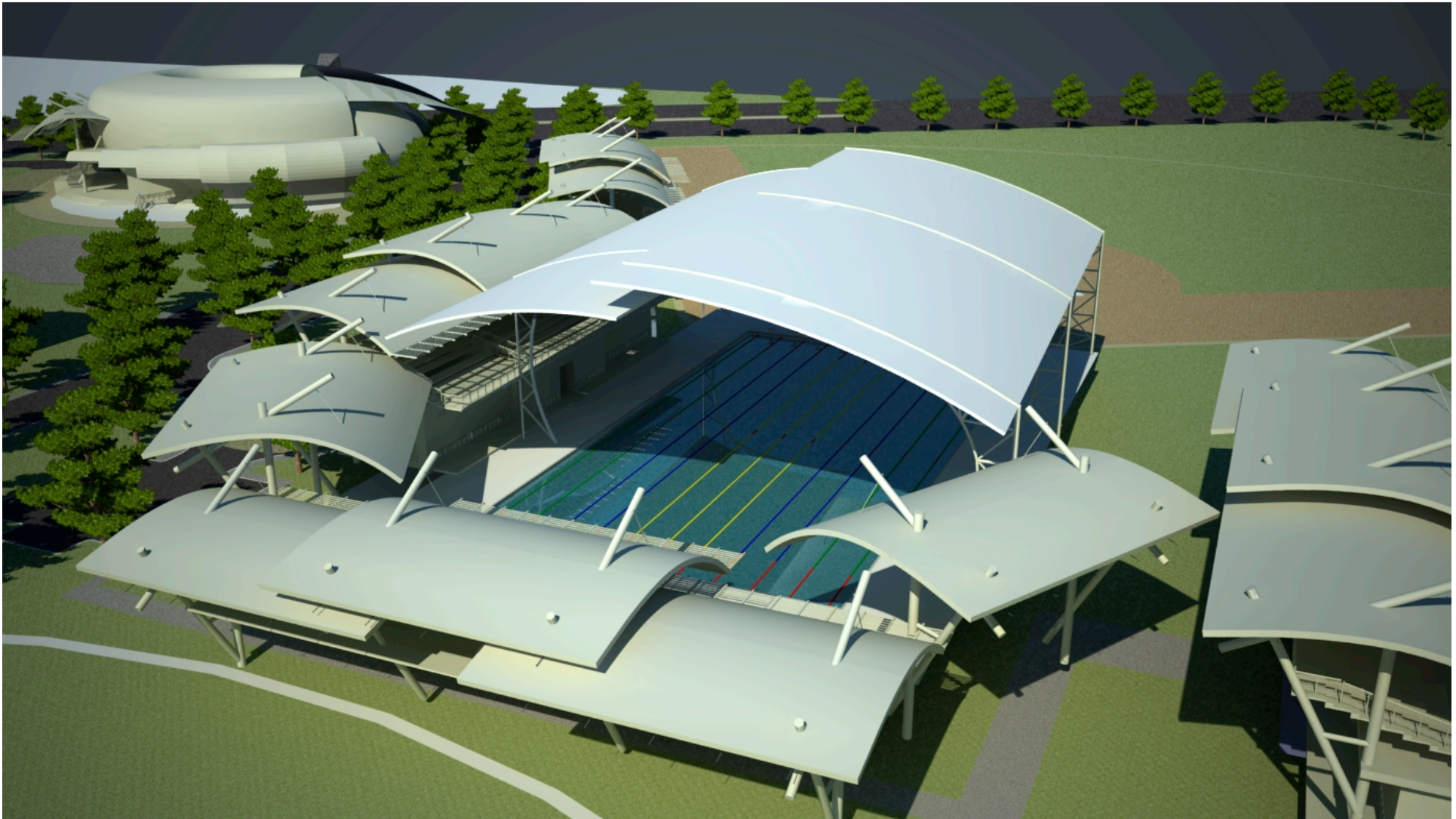
Source: OCA



New Olympic-sized Swimming Pool

Estimated Cost: 30M

Source: OCA 2010



Vinzons Hall Redevelopment

Estimated Cost: 147M

(J. Del Rosario, UPCA 2011)



Revenue Generation

- **Office of the Vice-Chancellor for Planning and Finance**

Accounting, Budget, Cashier, Business Concessions Office (now with OVCA)

Modeling of revenue streams, expertise in handling various types of UPD assets, etc.

Final Remarks: Meetings and Paperwork

- **Meetings in OC (4 March – 28 Oct 2011): 475 (15 per week)**
- **Programs attended: 119 (4 per week)**
- **Speeches & Messages: 58 (7 per month)**
- **Written Messages: 33 (4 per month)**
- **Travel Authority (2 March – 30 Sept 2011): 876 (28 per week)**
- **Appointment Papers: 1891 (61 per week)**
- **Funding Requests: 247 (9 per week)**

Documents signed per day: at least 20

Final Remarks: Concept and Implementation

Thin line of separation

- | | |
|------------------------------|--------------------------|
| ✓ Cautious | ○ Bureaucratic |
| ✓ Flexible | ○ Lacks vision |
| ✓ Meritocratic | ○ Elitist |
| ✓ Efficient | ○ Cutting corners |
| ✓ Political will | ○ Autocratic |
| ✓ Single-mindedness | ○ One-dimensional |
| ✓ Competence | ○ Charisma |
| ✓ Genuine achievement | ○ Celebrity |
| ✓ Results | ○ Rhetoric |
| ✓ Output | ○ Input |

Final Remarks 2: Concept and Implementation

Added 24 December 2011

Thin line of separation

✓ **Objective**

✓ **Passionate**

✓ **Flexible**

○ **Cold**

○ **Sentimental**

○ **Pandering**

Acknowledgment

- **President Alfredo Pascual**
- **UP Board of Regents**
- **Office of the Chancellor Management Team**
- **UPD Executive Committee**
- **Former UP Officials (2000-2011)**

Maraming salamat po!



Photo taken by: Dr. C. Arcilla
March 14, 2011